

The Maximart logo is written in a stylized, cursive red font with a registered trademark symbol (®) at the end. The background of the entire image is a close-up of a machine's interior, showing a perforated metal surface and various mechanical components like a spindle and tool holders.

Maximart®

CE / EMC ISO 9001

MILLING MACHINE

PRECISION • PERFORMANCE • RELIABILITY

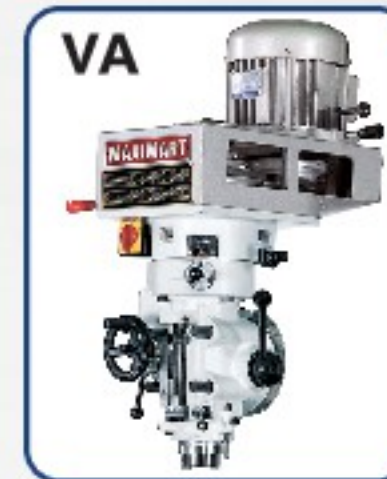
2V / 3V / 4V QUALITY FEATURES ASSURE GREATER VALUE

2V: X/Y/Z AXIS DOVETAIL SLIDEWAYS

3V: Y AXIS SQUARE SLIDEWAY

4V: Y/Z AXIS SQUARE SLIDEWAYS

Available Milling Heads



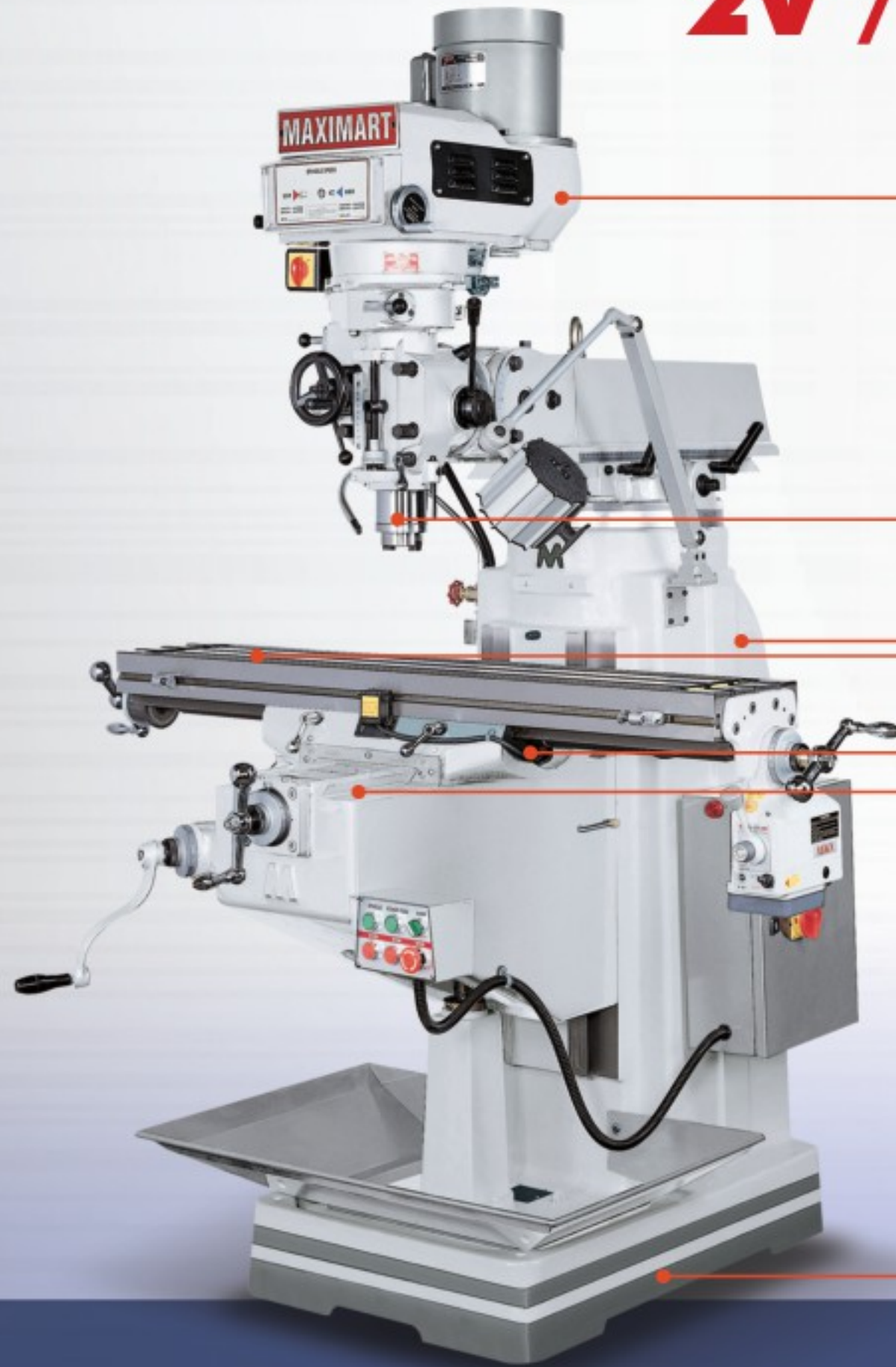
Step pulley



Mechanical variable

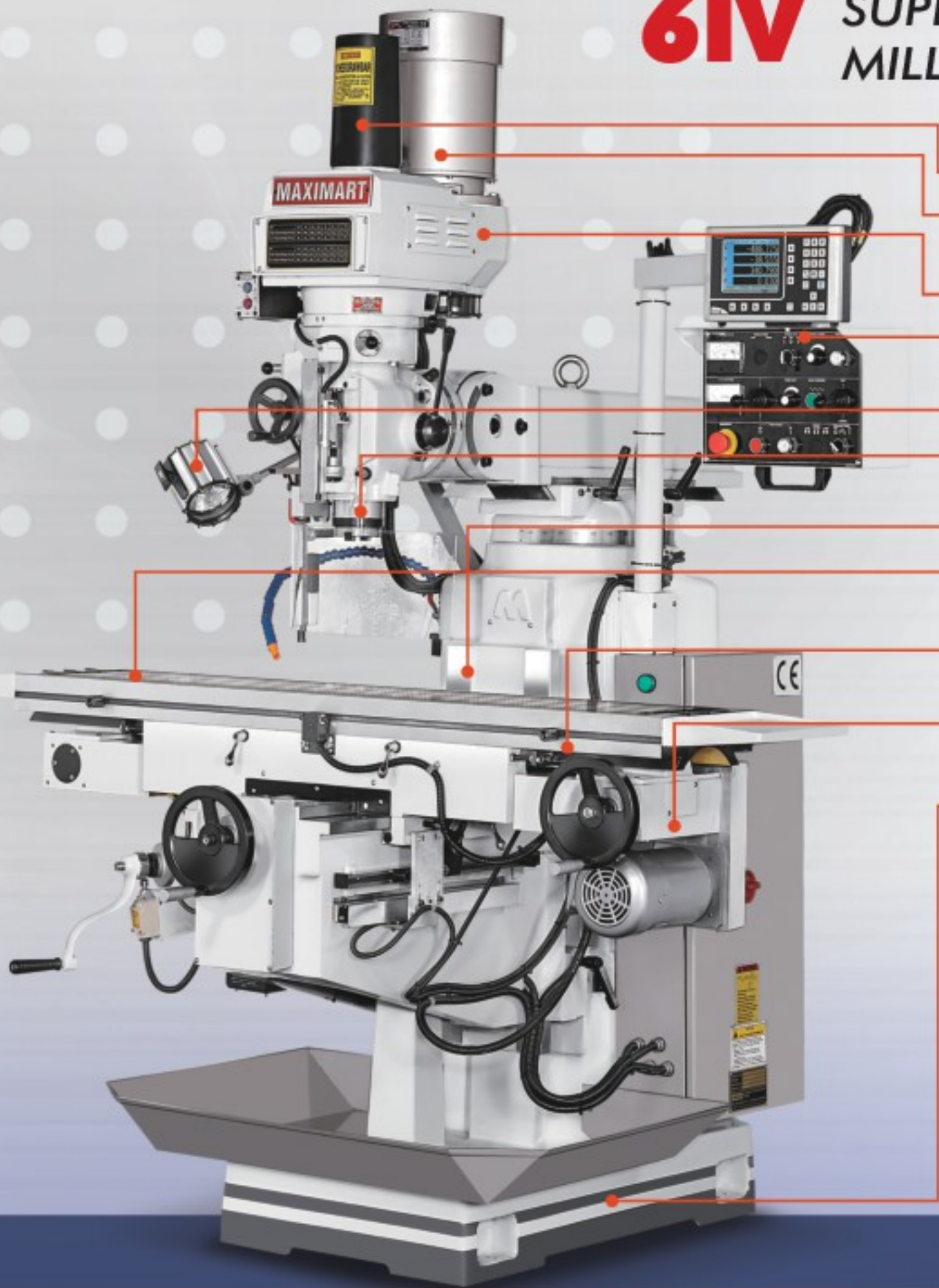


Inverter variable



- NEW TYPE HEAD HOUSING, BETTER CUTTING PERFORMANCE.
- CP4 SPINDLE BEARINGS + HEAVY-DUTY LONG-SLEEVE SPACER INSTALLED IN BETWEEN BEARINGS, ENHANCE STABLE CUTTING.
- NEW 2V HUMPACK MACHINE BODY, RIGID AND STABLE.
- WORK TABLE IS HARDENED AND PRECISELY GROUND, TABLE T-SLOTS ARE ALSO PRECISELY GROUND.
- CHROMED & HARDENED X / Y AXIS LEADSCREWS WITH DOUBLE-NUTS.
- 3 AXIS SLIDEWAYS ARE HARDENED AND PRECISELY GROUND, X & Y AXIS COATED WITH "WEAR-RESISTANCE FILM".
- ALL MEEHANITE CAST IRON MACHINE BODY.

6IV SUPERIOR FEATURES BOOST MILLING EFFICIENCY AND ACCURACY



- AIR POWERED DRAWBAR IS STANDARD EQUIPMENT.
- NEW 5HP INVERTER SPINDLE MOTOR + ELECTRO- MAGNETIC BRAKE, MORE POWERFUL AND SAFE OPERATION.
- NEW TYPE HEAD HOUSING , BETTER CUTTING PERFORMANCE.
- CONTROL PANEL BOX + FULL ELECTRICS CABINET + COOLANT SYSTEM + COOLANT/CHIP TRAY ARE STANDARD EQUIPMENT.
- HALOGEN WORKLIGHT AND AUTO LUBE SYSTEM ARE STANDARD EQUIPMENT.
- CP4 SPINDLE BEARINGS + HEAVY-DUTY LONG-SLEEVE SPACER INSTALLED IN BETWEEN BEARINGS, ENHANCE STABLE CUTTING.
- Y & Z AXIS SQUARE SLIDEWAYS.
- EXTRA LARGE 305 X 1524 MM (12" X 60") WORKTABLE IS HARDENED AND PRECISELY GROUND, TABLE T-SLOTS ARE ALSO PRECISELY GROUND.
- CHROMED & HARDENED X / Y / Z AXIS LEADSCREWS WITH DOUBLE NUTS. 3 AXIS SLIDEWAYS ARE HARDENED AND PRECISELY GROUND. X / Y COATED WITH "WEAR-RESISTANCE FILM".
- X & Y AXES ARE DRIVEN BY INVERTER MOTORS, WHILE Z AXIS (KNEE ELEVATING) FITTED WITH RAPID MOTOR.
- ALL MEEHANITE CAST IRON MACHINE BODY.



CE SAFETY SPECIFICATION:

As soon as spindle cover safety switch activated machine power cuts off automatically.

2VA 3HP 16-STEP PULLEY CHANGE MILLING HEAD

2VS 3HP VARIABLE SPEED MILLING HEAD

2IV 3HP INVERTER DRIVE VARIABLE SPEED MILLING HEAD, WITH SPINDLE ELECTRO-MAGNETIC BRAKE.

- RIGID HUMPBACK TYPE MACHINE BODY.
- NT30 or R-8 SPINDLE TAPER.
- 1245 x 230mm WORK TABLE.
- TRAVELS: X=MANUAL 970mm/AUTO 890mm
Y=360mm, Z=355mm.
- 3 AXES SLIDEWAY HARDENED & GROUND.
- X & Y AXIS COATED "WEAR-RESISTANCE FILM".
- X & Y LEADSCREWS CHROMED & HARDENED.
- 2IV STANDARD ACCESSORY INCLUDING,
FULL ELECTRICS CABINET
+ CONTROL PANEL BOX
+ COOLANT SYSTEM
+ COOLANT/CHIP TRAY.



*Machine Shown With
Optional Accessories*

3VA 3HP 16-STEP PULLEY CHANGE MILLING HEAD

3VS 3HP VARIABLE SPEED MILLING HEAD

3IV 3HP INVERTER DRIVE VARIABLE SPEED MILLING HEAD, WITH SPINDLE ELECTRO-MAGNETIC BRAKE.

- KONDISA TYPE HEAVY-DUTY MACHINE BODY.
- NT30 or R-8 SPINDLE TAPER.
- 1372 x 254mm WORK TABLE.
- TRAVELS: X = MANUAL 1005mm/AUTO 865mm
Y = 395mm, Z = 380mm.
- Y AXIS SQUARE SLIDEWAY.
- 3 AXES SLIDEWAY HARDENED & GROUND.
- X & Y AXIS COATED "WEAR-RESISTANCE FILM".
- X & Y AXIS LEADSCREWS CHROMED & HARDENED.
- 3IV STANDARD ACCESSORY INCLUDING,
FULL ELECTRICS CABINET
+ CONTROL PANEL BOX
+ COOLANT SYSTEM
+ COOLANT/CHIP TRAY.



*Machine Shown With
Optional Accessories*

4VA 4VS 4IV

5HP 16-STEP PULLEY CHANGE MILLING HEAD

5HP VARIABLE SPEED MILLING HEAD

5HP INVERTER DRIVE VARIABLE SPEED MILLING HEAD, WITH SPINDLE ELECTRO-MAGNETIC BRAKE.

- KONDIA TYPE HEAVY-DUTY MACHINE BODY.
- NT40 SPINDLE TAPER.
- QUILL DIAMETER 105mm.
- 1372 x 254mm WORK TABLE.
- TRAVELS: X = MANUAL 1050mm/AUTO 970mm, Y = 390mm, Z = 355mm.
- Y AXES SQUARE SLIDEWAY.
- 3 AXES SLIDEWAY HARDENED & GROUND.
- X & Y AXIS COATED "WEAR-RESISTANCE FILM".
- X & Y AXIS LEADSCREWS CHROMED & HARDENED.
- 4IV STANDARD ACCESSORY INCLUDING,
+ FULL ELECTRICS CABINET
+ CONTROL PANEL BOX
+ COOLANT SYSTEM
+ COOLANT/CHIP TRAY.



**Machine Shown With
Optional Accessories**

6IV 5HP INVERTER DRIVE VARIABLE SPEED MILLING HEAD, WITH SPINDLE ELECTRO-MAGNETIC BRAKE.

- KONDIA TYPE HEAVY-DUTY MACHINE BODY.
- NT40 SPINDLE TAPER.
- QUILL DIAMETER 105mm.
- 1524 x 305mm WORK TABLE.
- X & Y AXES POWERED BY INVERTER DRIVE.
- Z AXIS UP/DOWN RAPID MOTOR.
- Y & Z AXES SQUARE SLIDEWAY.
- 3 AXES SLIDEWAY HARDENED & GROUND.
- AIR POWERED DRAWBAR.
- LOW VOLTAGE HALOGEN WORKLIGHT.
- FULL ELECTRICS CABINET + COOLANT SYSTEM + CONTROL PANEL BOX.
- X / Y AXIS COATED "WEAR-RESISTANCE FILM".
- X / Y / Z AXIS LEADSCREWS CHROMED & HARDENED.
- AUTO LUBE UNIT.
- CHIP TRAY.



VERTICAL TURRET MILLING MACHINE

Machine Specifications

unit / mm

ITEM/MODEL	2VA	2VS	2IV	3VA	3VS	3IV	4VA	4VS	4IV	6IV
TABLE										
Table size	230 x 1245 (9' x 49")			254 x 1372 (10' x 54")			305 x 1524 (12' x 60")			
No. of T-slots	NO. 3			NO. 3			NO. 3			
T-slots width	28 (1.1")			28 (1.1")			28 (1.1")			
Slideway hardened & surface ground	YES			YES			YES			
Table surface hardened & ground	YES			YES			YES			
Slideway dovetail "V" or square "SQ"	XYZ = V			XZ = V Y = SQ			X = V YZ = SQ		X = V YZ = SQ	
MANUAL TRAVELS										
X axis	Manual	970 (38.2")		1005 (39.6")		1050 (41.3")		850 (31.5")		
	Auto (Opt.)	890 (35.0")		865 (34.1")		970 (38.2")		820 (32.3")		
Y axis	360 (14.2")		395 (15.6")		390 (15.4")		365 (14.4")			
Z axis	355 (14.0")		380 (15.0")		355 (14.0")		360 (14.2")			
Ram	470 (18.5")		560 (22.0")		555 (21.9")		560 (22.0")			
MILLING HEAD										
Motor	3HP		3HP		5HP		5HP			
Spindle speed r.p.m. (Step Pulley)	50HZ / 75-3800 16-Step 60HZ / 60-4300 16-Step						N / A			
Spindle speed r.p.m. (Mechanical Variable)	50HZ / Low range 75-450 60HZ / Low range 60-500			High range 680-3800-VARIABLE High range 550-4300-VARIABLE			N / A			
Spindle speed r.p.m. (Intert Variable)	70-4200-INVERTER									
Spindle taper	R8 / NT30				NT40					
Quill travel	127 (5")									
Quill feed/spindle rev.	0.04, 0.08, 0.015 rev. (0.0015", 0.0031", 0.006")									
Quill diameter	100 (4")									
Head tilt (front or back)	45°									
Head swivel (left or right)	90°									
CONSTRUCTION ALL MEEHANITE CAST IRON MACHINE BODY										
Column turret diameter	Ø380 (Ø14.96")		Ø380 (Ø14.96")		Ø390 (Ø15.35")		Ø380 (Ø14.96")			
Knee width	290 (11.42")		330 (12.99")		340 (13.39")		340 (13.39")			
Column bearing length	420 (16.54")		455 (17.91")		430 (16.93")		460 (18.11")			
Saddle / table bearing length	505 (19.89")		515 (20.28")		515 (20.28")		860 (33.86")			
Ram / turret bearing length	410 (16.14")		440 (17.32")		435 (17.13")		435 (17.13")			
Ram length	735 (28.94")		830 (32.68")		850 (33.46")		840 (33.07")			
Machine net weight	950kgs (2100 lbs)		1350kgs (2985 lbs)		1450kgs (3190 lbs)		1550kgs (3410 lbs)			

• Above specifications are subject to change without prior notice.

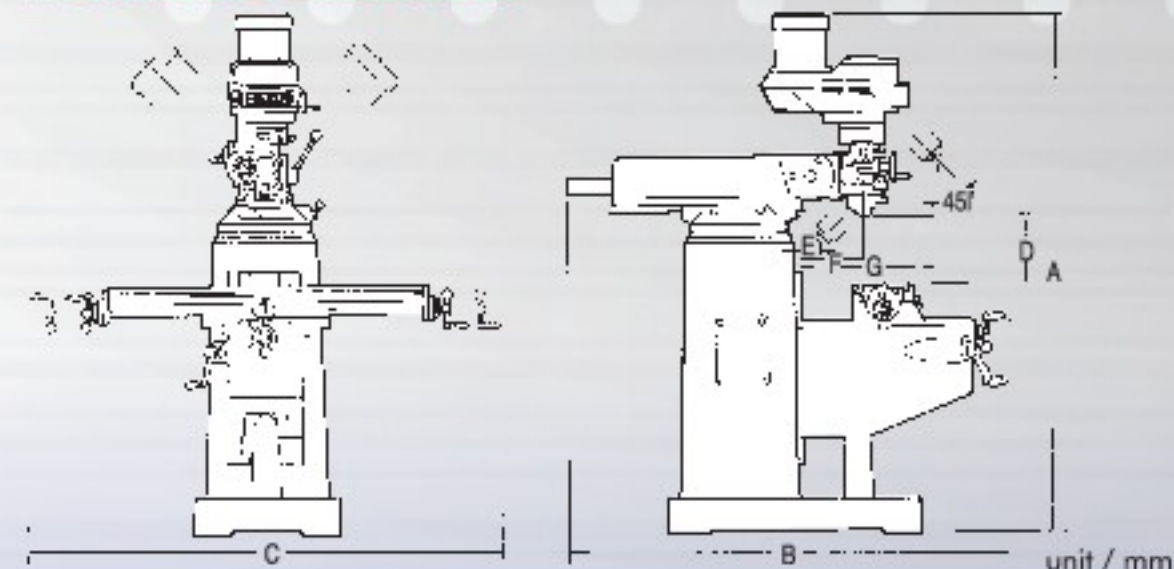
Standard Accessories

- All Meehanite Casting Machine Body.
- Worktable Hardened & Ground.
- Chromed X & Y Leadscrews.
- Ground Table T-slots.
- Hardened & Ground Slideways.
- Anti-Rust, Fine-Finish Durable Paint.
- Tools & Tool Box. 1 set.
- Front Chip Guard 1 pc.
- Rear Chip Guard 1 pc.
- Draw Bar 1 pc.
- Manual lubricator 1 set.

Optional Accessories

- CE/EMC Conformity Machine.
- CSA Electrics.
- Air-Powered Draw Bar. (except 6IV)
- Electric Powered Draw Bar.
- Power feed unit for X, Y, Z axis.
- Gear-Type feed unit for X, Y, Z axis.
- Ballscrew For X, Y axis.
- Electrical Cabinet.
- Control Panel Box.
- Coolant System.
- Coolant/Chip Tray.
- Halogen Worklight.
- 3 or 4 Axes (Quill) D.R.O. System.
- Milling Chuck Set.
- Clamping Kit Set.
- 6" or 8" Milling Vise.
- Horizontal Milling Attachment.
- Right Angle Attachment.
- Slotting Head.

Machine Dimensions



MODEL	2V	3V	4V	6IV
A x B x C	2250x1675x2520	2210x1980x2570	2255x2700x1970	2390x1960x2290
D	MAX	435	490	470
	MIN	80	110	115
E	MAX	500	480	480
	MIN	0	0	0
F	MAX	585	650	740
	MIN	115	90	185
G	MAX	645	740	745
	MIN	175	180	190

THE BEST TOOL ROOM **BED MILLS**



- WELL-BALANCED MILLING HEAD COUNTER WEIGHT MECHANISM.
- OPTIONAL ELECTRICAL OR AIR POWERED DRAWBAR
- DIAL INDICATOR MEASURING DEVICE FOR QUILL MOVEMENT.
- FOR STABLE CUTTING, MILLING HEAD CAN BE SECURELY LOCKED BY MANUAL LOCKING DEVICE WHICH INTEGRATED WITH A SAFETY MICRO SWITCH. Z AXIS CAN TRAVEL FREELY ONLY AFTER MANUAL LOCKING IS RELEASED.
- OVERARM CONTROL PANEL BOX + 220(380)V/3PH/50(60)HZ FULL ELECTRICS CABINET + COOLANT SYSTEM ARE STANDARD FEATURES.
- SPINDLE FITTED WITH ELECTRO-MAGNETIC BRAKE AND 3 AXES BALLSCREWS + BRAKE MOTORS ARE STANDARD EQUIPMENT.
- TABLE, TBALE T-SLOTS AND 3 AXES SLIDEWAYS ARE HARDENED & PRECISELY GROUND.
- 4 HANDWHEELS DESIGN.
- 3 AXES INVERTER DRIVE AUTO FEEDING WITH "HTD" TYPE DRIVE BELT.
- CNC TYPE COOLANT/CHIP TRAY.
- ALL MEEHANITE CAST IRON MACHINE BODY.

MX-B2IV MX-B2S MX-B2A

**5HP INVERTER VARIABLE SPEED MILLING HEAD,
SPINDLE FITTED ELECTRO-MAGNETIC BRAKE.**

**5HP MECHANICAL VARIABLE SPEED MILLING HEAD,
WITHOUT SPINDLE BRAKE.**

**5HP 10 STEPS PULLEY CHANGE MILLING HEAD,
SPINDLE FITTED ELECTRO-MAGNETIC BRAKE.**

- NT40 SPINDLE TAPER.
- WORK TABLE 1370 x 254mm, HARDENED & PRECISELY GROUND.
- TRAVELS: X = 750mm, Y = 445mm, Z = 490mm.
- 4 HANDWHEELS DESIGN.

Standard Features

- CP4 PRECISION GRADE SPINDLE BEARINGS.
- 105mm CHROMED QUILL.
- DIAL INDICATOR ASSEMBLY ON QUILL FEED.
- BOX-WAY DESIGN ON Y & Z AXIS.
- 3 AXES PRECISION DOUBLE-NUT BALLSCREWS, Z AXIS BALLSCREW PROTECTED BY FLEXIBLE RUBBER COVER
- 3 AXES BRAKE MOTORS..
- Z AXIS MANUAL LOCKING MECHANISM.
- 3 AXES VARIABLE SPEED FEEDING THRU AC INVERTER CONTROL.
- Y AXIS FRONT SLIDEWAY WITH STEEL COVER.
- Y AXIS REAR SLIDEWAY WITH RUBBER COVER.
- COOLANT SYSTEM.
- COOLANT / CHIP TRAY.
- AUTO LUBE UNIT.
- LOW VOLTAGE HALOGEN WORKLIGHT.
- OVERARM OPERATOR'S CONTROL PANEL BOX.
- 220(380)V/3PH/50(60) HZ FULL ELECTRICS CABINET.

Options

- CE/EMC CONFORMITY MACHINE.
- CSA ELECTRICS.
- 5KVA TRANSFORMER FOR 460V-600V INPUT POWER.
- ELECTRIC POWERED DRAW BAR.
- AIR POWERED DRAW BAR.
- COOLANT-OIL SKIMMER.
- 2 OR 3 AXES D.R.O. SYSTEM.
- MILLING CHUCK & COLLET SET.
- MILLING VISE.
- CLAMPING KIT SET.
- RIGHT ANGLE MILLING ATTACHEMENT.



MX-B3IV

MX-B3S

MX-B3A

**5HP INVERTER VARIABLE SPEED MILLING HEAD,
SPINDLE FITTED ELECTRO-MAGNETIC BRAKE.**

**5HP MECHANICAL VARIABLE SPEED MILLING HEAD,
WITHOUT SPINDLE BRAKE.**

**5HP 10 STEPS PULLEY CHANGE MILLING HEAD,
SPINDLE FITTED ELECTRO-MAGNETIC BRAKE.**

- NT40 SPINDLE TAPER.
- WORK TABLE 1524 x 380mm, HARDENED & PRECISELY GROUND.
- TRAVELS: X = 1050mm, Y = 500mm, Z = 600mm.
- 4 HANDWHEELS DESIGN.

Standard Features

- CP4 PRECISION GRADE SPINDLE BEARINGS.
- 105mm CHROMED QUILL.
- DIAL INDICATOR ASSEMBLY ON QUILL FEED.
- BOX-WAY DESIGN ON Y & Z AXIS.
- 3 AXES PRECISION DOUBLE-NUT BALLSCREWS, Z AXIS BALLSCREW PROTECTED BY FLEXIBLE RUBBER COVER
- 3 AXES BRAKE MOTORS..
- Z AXIS MANUAL LOCKING MECHANISM.
- 3 AXES VARIABLE SPEED FEEDING THRU AC INVERTER CONTROL.
- Y AXIS FRONT SLIDEWAY WITH STEEL COVER.
- Y AXIS REAR SLIDEWAY WITH RUBBER COVER.
- COOLANT SYSTEM.
- COOLANT / CHIP TRAY.
- AUTO LUBE UNIT.
- LOW VOLTAGE HALOGEN WORKLIGHT.
- OVERARM OPERATOR'S CONTROL PANEL BOX.
- 220(380)V/3PH/50(60) HZ FULL ELECTRICS CABINET.

Options

- CE/EMC CONFORMITY MACHINE.
- CSA ELECTRICS.
- 5KVA TRANSFORMER FOR 460V-600V INPUT POWER
- MACHINE COLUMN 150mm RISER BLOCK.
- ELECTRIC POWERED DRAW BAR.
- AIR POWERED DRAW BAR.
- COOLANT-OIL SKIMMER.
- 2 OR 3 AXES D.R.O. SYSTEM.
- RIGHT ANGLE MILLING ATTACHEMENT.
- MILLING CHUCK & COLLET SET.
- CLAMPING KIT SET.
- MILLING VISE.
- RIGHT ANGLE MILLING ATTACHMENT.



MX-B5IV

**7.5HP INVERTER VARIABLE SPEED MILLING HEAD,
SPINDLE FITTED ELECTRO-MAGNETIC BRAKE.**

MX-B5A

**7.5HP 10 STEPS PULLEY CHANGE MILLING HEAD,
SPINDLE FITTED ELECTRO-MAGNETIC BRAKE.**

- NT40 SPINDLE TAPER.
- WORK TABLE 1575 x 425mm, HARDENED & PRECISELY GROUND.
- TRAVELS: X = 1200mm, Y = 580mm, Z = 600mm.
- 4 HANDWHEELS DESIGN.

Standard Features

- CP4 PRECISION GRADE SPINDLE BEARINGS.
- 110mm CHROMED QUILL.
- DIAL INDICATOR ASSEMBLY ON QUILL FEED.
- BOX-WAY DESIGN ON Y & Z AXIS.
- 3 AXES PRECISION DOUBLE-NUT BALLSCREWS, Z AXIS BALLSCREW PROTECTED BY FLEXIBLE RUBBER COVER
- 3 AXES BRAKE MOTORS..
- Z AXIS MANUAL LOCKING MECHANISM.
- 3 AXES VARIABLE SPEED FEEDING THRU AC INVERTER CONTROL.
- Y AXIS FRONT SLIDWAY WITH STEEL COVER.
- Y AXIS REAR SLIDWAY WITH RUBBER COVER.
- COOLANT SYSTEM.
- COOLANT / CHIP TRAY.
- AUTO LUBE UNIT.
- LOW VOLTAGE HALOGEN WORKLIGHT.
- OVERARM OPERATOR'S CONTROL PANEL BOX.
- 220(380)V/3PH/50(60) HZ FULL ELECTRICS CABINET.

Options

- CE/EMC CONFORMITY MACHINE.
- CSA ELECTRICS.
- 5KVA TRANSFORMER FOR 460V-600V INPUT POWER.
- MACHINE COLUMN 150mm RISER BLOCK.
- ELECTRIC POWERED DRAW BAR.
- AIR POWERED DRAW BAR.
- COOLANT-OIL SKIMMER.
- 2 OR 3 AXES D.R.O. SYSTEM.
- MILLING CHUCK & COLLET SET.
- CLAMPING KIT SET.
- MILLING VISE.
- RIGHT ANGLE MILLING ATTACHMENT.



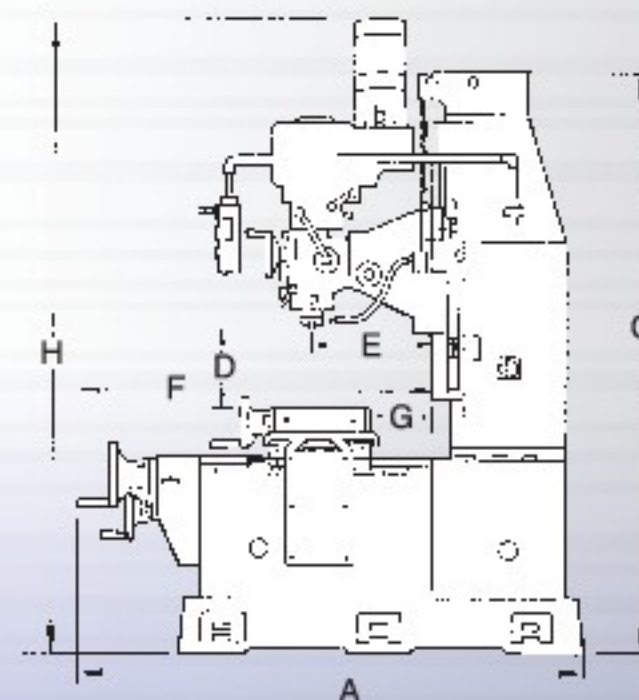
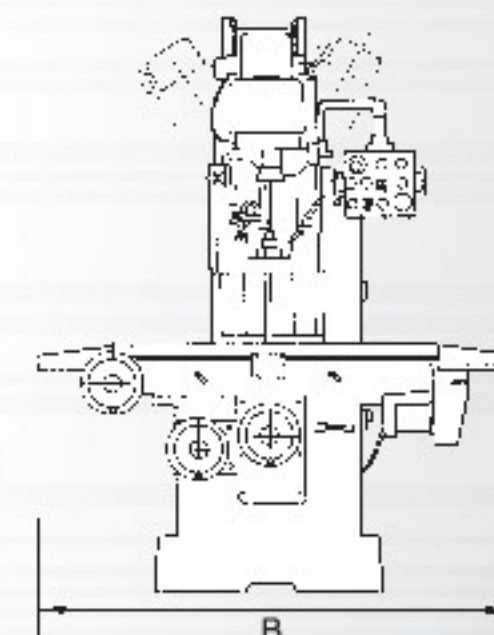
Machine Specifications

unit / mm

ITEM/MODEL	MX-B2A STEP PULLEY	MX-B2S MECHANICAL VARIABLE	MX-B2IV INVERTER	MX-B3A STEP PULLEY	MX-B3S MECHANICAL VARIABLE	MX-B3IV INVERTER	MX-B5A STEP PULLEY	MX-B5IV INVERTER
Table size	1370 x 254 (54" x 10")			1524 x 380 (60" x 15")			1575 x 425 (62" x 16-3/4")	
T-slot	16(0.63") x 3 x 63.5 (2.48")			18 (0.709") x 3 x 80 (3.15")			18 (0.709") x 4 x 80 (3.15")	
X axis travel	750 (29.53")			1050 (41.34")			1200 (47.24")	
Y axis travel	445 (17.52")			500 (19.69")			580 (22.83")	
Z axis travel	490 (19.29")			600 (23.62")			600 (23.62")	
Quill travel	127 (5")			127 (5")			152 (6")	
Quill diameter	105 (4.13")			105 (4.13")			110 (4.33")	
Quill feeds	0.04, 0.08, 0.15mm/rev			0.04, 0.08, 0.15mm/rev			0.04, 0.08, 0.15mm/rev	
Spindle taper	NT#40			NT#40			NT#40	
Spindle bearing	CP4			CP4			CP4	
Spindle speed r.p.m (Step Pulley)	50HZ/55-2580(10 step) 60HZ/60-3000(10 step)			50HZ/55-2580(10 step) 60HZ/60-3000(10 step)			50HZ/55-2580(10 step) 60HZ/60-3000(10 step)	
Spindle speed r.p.m (Mechanical Variable)	50HZ/55-3550 60HZ/70-4300			50HZ/55-3550 60HZ/70-4300			50HZ/55-3550 60HZ/70-4300	
Spindle speed r.p.m (Inverter Variable)	4P/140-3650 8P/55-1115			4P/140-3650 8P/55-1115			4P/140-3650 8P/55-1115	
Feed speed	X, Y axis/18-788mm/min Z axis/18-788mm/min			X, Y axis/28-1100mm/min Z axis/18-788mm/min			X, Y axis/28-1100mm/min Z axis/18-788mm/min	
Spindle motor	5HP with brake (except mx-B2S)			5HP with brake (except mx-B3S)			7.5HP with brake	
X axis motor	1/2 HP with brake			1 HP with brake			1 HP with brake	
Y axis motor	1/2 HP with brake			1 HP with brake			1 HP with brake	
Z axis motor	1/2 HP with brake			1/2 HP with brake			1/2 HP with brake	
Coolant pump	1/8 HP			1/8 HP			1/8 HP	
Net weight	2000 kgs			3000 kgs			3300 kgs	

Machine Dimensions				
A x B x C		1680 x 1815 x 2000	1950 x 2360 x 2170	2050 x 2490 x 2150
D	MAX	570	700	700
	MIN	80	100	100
E		440	520	600
F		1150	1200	1300
G	MAX	530	552	600
	MIN	85	52	20
H		2500	2600	2680

Machine Dimensions



MAXIMART CORPORATION

www.maximart.com.tw

TEL: 886-2-2531-4161

E-mail: maximart.tw@gmail.com

FAX: 886-2-2563-4936

